



# GRV5HDW

## USER MANUAL



For more information  
on the Gator range  
go to our website

[gatordriverassist.com](http://gatordriverassist.com) 

### INCLUSIONS:

5" Wireless Monitor, Mounting Bracket With Adhesive Pad, Monitor Sunvisor,  
720P HD Wireless Camera, 1.7M 10-32V Monitor Power Adaptor,  
1.5M Monitor Power Cable & 2.5M Camera Power Cable.

# Contents

Installation diagram.....	2
Introduction.....	3
Product information.....	4
Menu operation (Main Menu).....	5
Menu operation (Language).....	5
Menu operation (Picture Flip).....	6
Menu operation (Backlight Brightness).....	6
Menu operation (Factory Default).....	7
Menu operation (System Information).....	7
Menu operation (Camera Pair).....	8
Monitor specifications.....	10
Camera specifications.....	10
Inclusions.....	11
Technical assistance.....	11

# Installation diagram

Monitor



Camera



**Option1**  
**Socket**  
**wired**



1.7 Metres

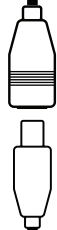
**10-32V DC** car  
accessory socket

**Option2**  
**Hardwired**



1.5 Metres

**Powerwires**  
(10-32V Accessory)



2.5 Metres

**Powerwires**  
(Reversing light 10-32V)

## Introduction

Before using this unit, please read this instruction manual carefully. Take special care to follow the warnings indicated on the unit itself as well as the safety suggestions listed. Keep this instruction for future reference.

### **WARNING:**

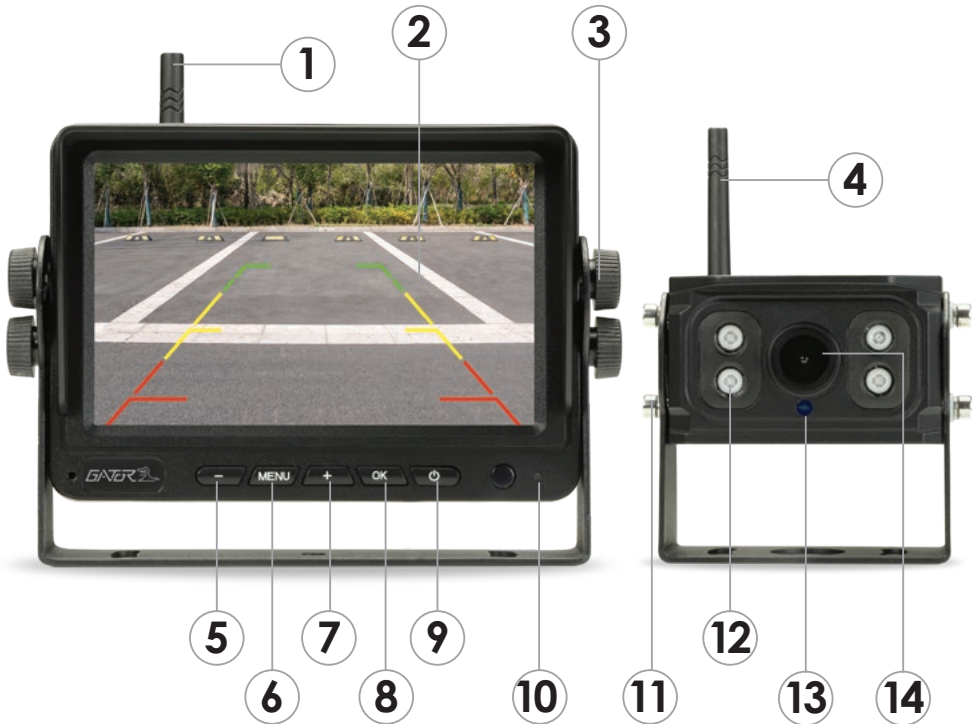
The wireless monitor reversing system is designed to be used with, not instead of other viewing aids in your vehicle. The manufacturer shall not be held liable for any accidents which occurred while operating this system.

### **Working Voltage**

Monitor: voltage range 10V-32V

Camera and Transmitter: 10V-32V $\leq$ 600mA

Note: If the power is over 32V to camera, it will cause the damage.



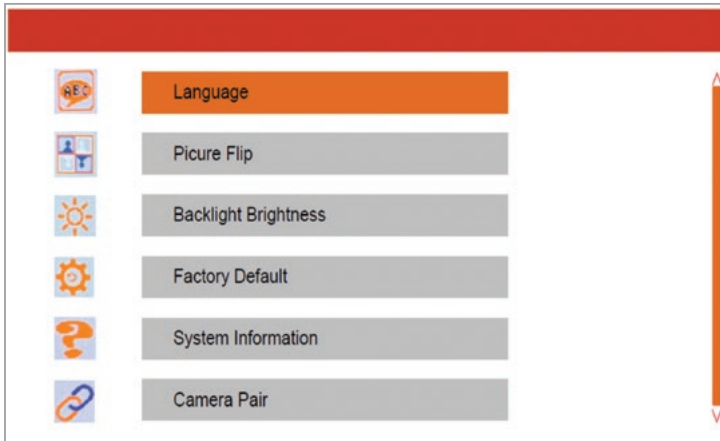
1. **Monitor wireless antenna**
2. **Screen**
3. **Adjustable monitor angle mount**
4. **Camera wireless antenna**
5. **Guideline:** On home screen quick press OK button
5. **- Selection button**
6. **Menu button:** Press to enter/exit the menu settings
7. **+ Selection button**
8. **OK button:** On home screen can be pressed to turn guidelines ON/OFF
9. **Power button:** Press for 1 second to turn on or off.
10. **Power light (Blue)**
11. **Adjustable camera angle mount**
12. **IR lights**
13. **IR Sensor**
14. **Camera lens**

## Menu operation

When the monitor is on, press the "MENU" button to enter into the menu settings. Press the "+ / -" buttons to increase or decrease the parameter setting. Press the "OK" button to confirm setting.

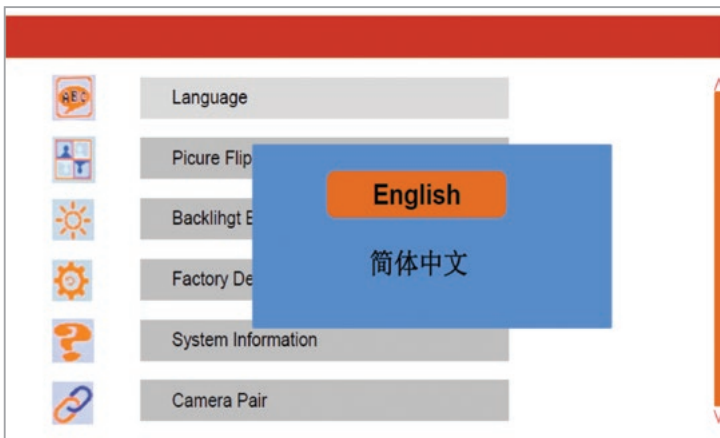
### Main menu

Language / Picture Flip / Backlight Brightness / Factory Default / System Information / Camera Pair



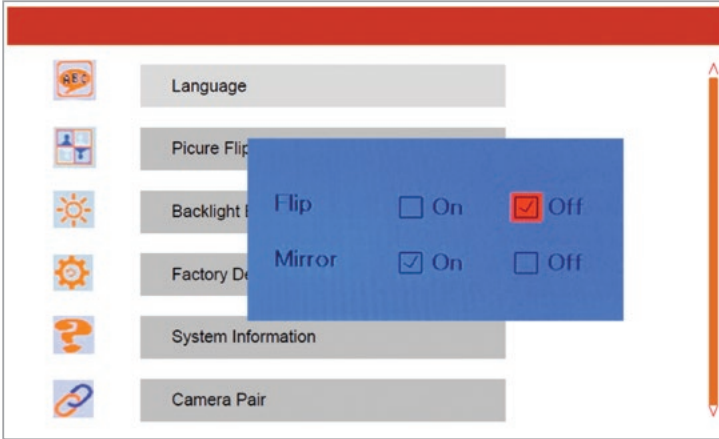
### Language

Press the "OK" button to enter the language choice interface and press the "+ / -" buttons to select required language.



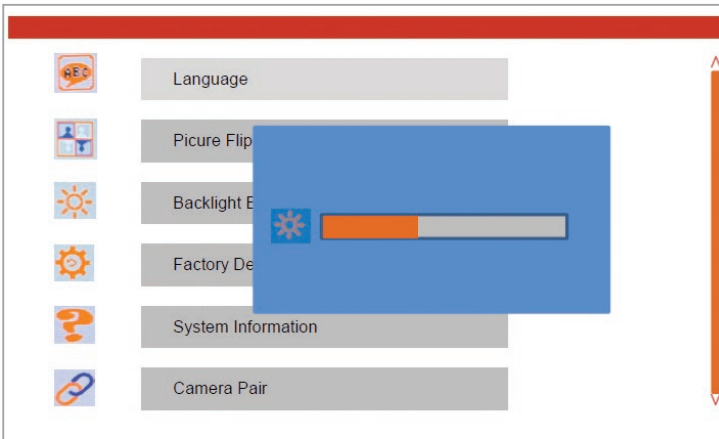
## Picture Flip

Press the “OK” button to enter the picture flip interface and press the “+ / -” buttons to turn mirror and flip function on/off



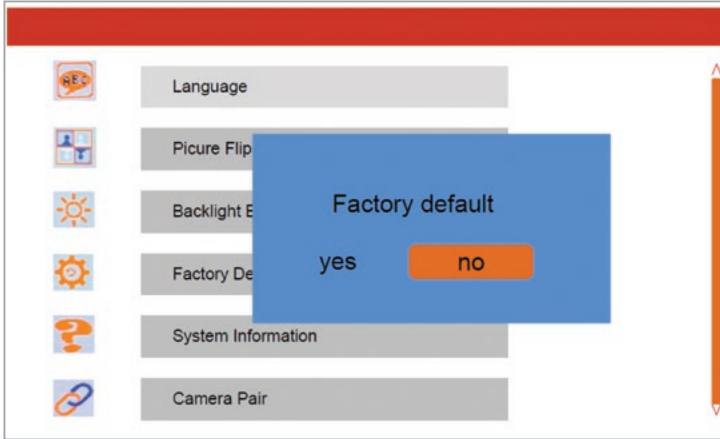
## Backlight Brightness

Press the “OK” button to enter the backlight brightness interface and press the “+ / -” buttons to adjust.



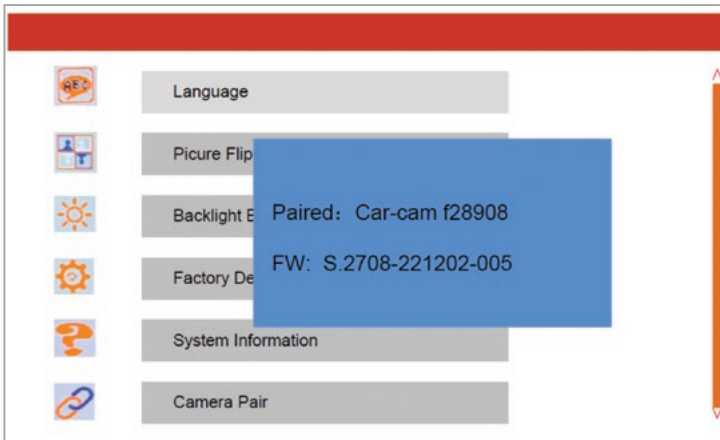
## Factory Default

Press the “OK” button to enter the factory default settings and press the “+ / -“ buttons to select yes or no to restore the monitor to default factory settings.



## System Information

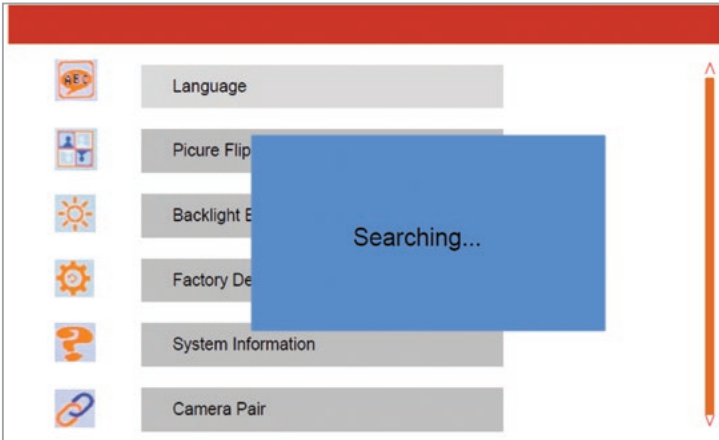
Press the “OK” button to enter the system information setting to show pairing camera and firmware information,





### Camera Pair

Press the “OK” button enter to the camera pair settings. With the camera powered a text window will appear on screen saying “searching” .

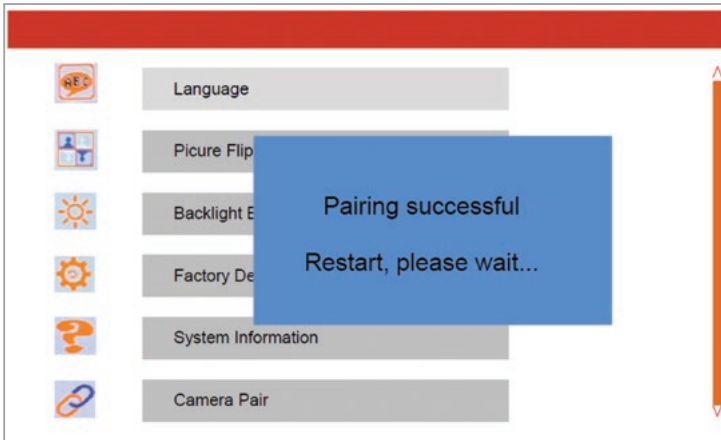


After a few seconds the camera name for pairing will appear. Press the “OK” button to confirm camera.



## Menu operation

Once successfully paired, a text window will appear saying "Pairing successful", and the camera will activate.



## Monitor specifications

Display Device.....	Colorful IPS LCD
Size.....	5 Inch
Interface.....	Digital
Resolution.....	800 x 480 (RGB)
Luminance (Nits).....	350 cd/m2
Contrast Ratio.....	350:1
Power Consumption.....	5W
Video frame.....	30FPS
Power Supply.....	10-32VDC
View Angle (LR/UD).....	L 90, R 90, U 90, D 90 (Degree's)
Wireless Frequency.....	2400 ~ 2483.5MHz (2.4G hz frequency hopping technology Chipset Solution)
Operating Temperature.....	-20°C to +70°C
Weight.....	280g
Dimensions.....	L 153.2 x W 48.2 x H 109mm

## Camera specifications

Type.....	1/3.0" HD CMOS
Resolution.....	1280(H)X720(V) pixels
Voltage.....	10-32VDC
Sensitivity.....	0.1 LUX with IR on
IR night vision.....	Yes
IR cut.....	Yes
S/N Ratio.....	46dB
Current Draw.....	250mA(Max)
Electronic Shutter.....	Auto
Lens.....	f 2.8mm
IP Rating.....	IP69K
Weight.....	338g
Dimensions.....	L81 x W65x H80mm
Operating Temperature.....	-20°C to +70°C
View Angle.....	110°

## Inclusions

- 1 x 5" Wireless monitor
- 1 x Monitor mount
- 1 x 1.5M Monitor cable
- 1 x Sunvisor
- 1 x Power adaptor 1.7 M length
- 1 x Wireless HD 720P reverse camera
- 1 x 2.5M Camera cable

## Technical assistance

If you need assistance setting up or using your Gator product now or in the future, call Gator Support. Australia  
TEL: 03 – 8587 8898  
FAX: 03 – 8587 8866  
Mon-Fri 9am – 5pm AEST

Please retain this user guide for future reference.

If you would like to download a digital copy of this manual, or other Gator manuals/software, please visit the [gatordriverassist.com](http://gatordriverassist.com) website and click on 'Firmware & Manuals' or search for the product model number for more information, accessories and products.

This manual is considered correct at time of printing but is subject to change. For latest manuals and updates refer to the website.

Copyright © 2023 by TDJ Australia  
All rights reserved. No part of this publication may be reproduced, distributed, or transmitted in any form or by any means, including photocopying, recording, copying or other electronic or mechanical methods, without the prior written permission of the author.

[www.gatordriverassist.com](http://www.gatordriverassist.com)